

## P.S. I LOVE YOU

PIANO (ACCORDION)

MODERATELY SLOW

(♩ = 112)

Arranged by [illegible]

f  
 Bbm9 - Bbm7 Dbm9 / Gb9 Ebm7 Cb Bbm7 A9-5

Sax's (Or Opt. Vocal)  
 L.H. mf  
 Ab  
 Cm7 F9 Bbm7 Eb9 Cm7-5 F7

Bb9 Bbm9 Eb13-9 Ab E7 Bbm7 Eb7

L.H. mf  
 Ab  
 Cm7 F9 Bbm7 Eb9 Cm7-5 F7

PIANO

Br. Tutti

Chords: Bb9, Bbm9, Eb13-9, Ab, Gb9, Cm7 Ab

**B**

Chords: Ab7, Ebm7, Ab7, Ebm7 Ab7, Fm7 Db, Ab7-9, Db

Chords: Bb7, Fm7, Bb7, Fm7 Bb7, Eb7, Cb9-5, Bb7, Eb9

**C**

*mf*  
Trom. + Sax's

Chords: Ab, Cm7, F7, Bbm7, Eb7, Cm7-5, F7 B7

Br. Tutti

Chords: Bb9, Bbm9, A7, Ab, Gb9, Cm7 Ab

PIANO(3)

Handwritten musical score for Piano (3). The system consists of two staves. The top staff contains a melodic line with a long slur over the first four measures and a triplet of eighth notes in the second measure. The bottom staff contains a bass line with chords. Chord symbols are: Gm7, Am7, Bbmaj7 Bb, Gb9.

Handwritten musical score for Saxophone. The system consists of two staves. The top staff contains a melodic line with a long slur over the first four measures and a triplet of eighth notes in the second measure. The bottom staff contains a bass line with chords. Chord symbols are: F, mf, Am7, D9, Gm7, C9, Eb9, D9.

Handwritten musical score for II<sup>o</sup> Tpt. Solo AD LIB. The system consists of two staves. The top staff contains a melodic line with a long slur over the first four measures and a triplet of eighth notes in the second measure. The bottom staff contains a bass line with chords. Chord symbols are: G9, Gm7, C9, F, Db7, Gm7, Gb9.

Handwritten musical score for Saxophone. The system consists of two staves. The top staff contains a melodic line with a long slur over the first four measures and a triplet of eighth notes in the second measure. The bottom staff contains a bass line with chords. Chord symbols are: F, mf, Am7, D9, Gm7, C9, Am7-5, D7-9.

Handwritten musical score for II<sup>o</sup> Tpt. Solo. The system consists of two staves. The top staff contains a melodic line with a long slur over the first four measures and a triplet of eighth notes in the second measure. The bottom staff contains a bass line with chords. Chord symbols are: G9, Gm9, Gb7, F, Eb9, F, f2, F9.

5

FINNO

F9 Cm7 F9 B° Cm7 Cb4-3 Bbmaj.9 Bb

G9 Dm7 G7 C#° Dm7 G13-9 Gm7 C7 Bbm9 A7#9

H

Sax's

mf

Ab Cm7 F9 Bbm7 Eb9 Cm7-5 F7

Br.

Bb9 Bbm9 Eb13-9 Ab E7

Br.

Sax's

fp

rit.

Bbm7 Gb9 Cb

# P.S. I LOVE YOU

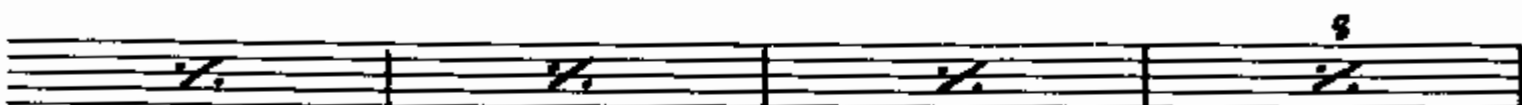
**STRING BASS**  
**MODERATELY SLOW**  
*Pizz*

By JOHNNY MERCER  
and GORDON JENKINS  
Arranged by Glenn Ozzer





## P.S. I LOVE YOU

By JOHNNY MERCER  
and GORDON JENKINS  
Arranged by Glenn Osner**DRUMS**  
MODERATELY SLOW**A** (Sax's) (With Muted Br.)**B** 2nd BEAT (Trom. Solo)

Musical staff with notes and rests, measure 4 marked.

**E** *f* (Sax's)

Musical staff for Saxophone with notes and rests, measure 4 marked.

*mf*  
(Tpt. Solo)

Musical staff with rests, measure 8 marked.

**F** (Sax's)

Musical staff for Saxophone with notes and rests, measure 4 marked.

(Tpt. Solo)

Musical staff with rests and notes, measure 7 marked, ending with (Ens.)

**G**

Musical staff with notes and rests.

Musical staff with notes and rests.

VOCAL  
**H** \*2<sup>nd</sup> BEAT (Sax's) (With Muted Br.)

*mf*

Musical staff for Saxophone with notes and rests, measure 4 marked.

Musical staff with rests, measure 8 marked.

(Open Br.)

Musical staff with notes and rests, ending with rit. and Cillo.



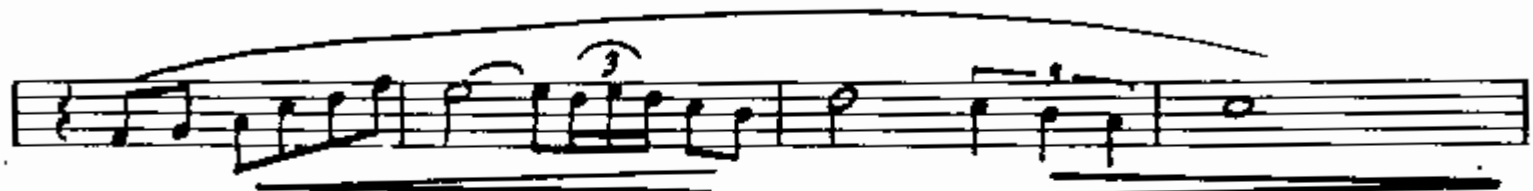
# P.S. I LOVE YOU

1<sup>st</sup> Eb ALTO SAX  
MODERATELY SLOW  
(NO VIB.)

JOHNNY MERCER  
... ORDON JENKINS  
Arranged by Glenn Osser



**A** *Soli*



**C** (With Trom.)



**L**  
 Musical staff with treble clef, key signature of two sharps (F# and C#), and a 7/8 time signature. The music features a melodic line with eighth and sixteenth notes, including a triplet. A dynamic marking of *f* is present.

**E** *Soli*  
 Musical staff with a bass clef. The music features a melodic line with eighth and sixteenth notes, including a triplet. A dynamic marking of *f* is present.

Musical staff with a bass clef. The music features a melodic line with half notes and quarter notes. A dynamic marking of *pp* is present.

**F** *Soli*  
 Musical staff with a bass clef. The music features a melodic line with eighth and sixteenth notes, including a triplet. A dynamic marking of *f* is present.

Musical staff with a bass clef. The music features a melodic line with half notes and quarter notes. A dynamic marking of *pp* is present.

**G**  
 Musical staff with a bass clef. The music features a melodic line with eighth and sixteenth notes.

Musical staff with a bass clef. The music features a melodic line with eighth and sixteenth notes, including a triplet. A dynamic marking of *f* is present.

**H** *Soli*  
 Musical staff with a treble clef. The music features a melodic line with eighth and sixteenth notes, including a triplet. A dynamic marking of *mf* is present.

Musical staff with a treble clef. The music features a melodic line with eighth and sixteenth notes.

Musical staff with a bass clef. The music features a melodic line with half notes and quarter notes. A dynamic marking of *Soli* is present.

# P.S. I LOVE YOU

3rd Eb ALTO SAX  
MODERATELY SLOW  
(NO VIB)

By JOHNNY MERCER  
and GORDON JENKINS  
Arranged by Glenn Osser



## A Soli



## C (With Trom.)



**D**  
Musical staff with treble clef, key signature of two sharps (F# and C#), and 4/4 time signature. The melody features a series of eighth notes with a slur and a triplet of eighth notes. A dynamic marking of *f* is present.

**E** *Soli*  
Musical staff with treble clef. The melody continues with eighth notes and a slur. A dynamic marking of *f* is present.

Musical staff with treble clef. The melody consists of a series of half notes with a slur. A dynamic marking of *pp* is present.

**F** *Soli*  
Musical staff with treble clef. The melody features eighth notes with a slur and triplet markings. A dynamic marking of *f* is present.

Musical staff with treble clef. The melody consists of a series of half notes with a slur. A dynamic marking of *pp* is present.

**G**  
Musical staff with treble clef. The melody features eighth notes with a slur and a key signature change to one sharp (F#). A dynamic marking of *f* is present.

Musical staff with treble clef. The melody continues with eighth notes and a slur.

**H** *Soli*  
Musical staff with treble clef. The melody features eighth notes with a slur and triplet markings. A dynamic marking of *mf* is present.

Musical staff with treble clef. The melody features eighth notes with a slur and a key signature change to one flat (Bb). A dynamic marking of *f* is present.

**I** *Soli*  
Musical staff with treble clef. The melody features a series of notes with a slur and a key signature change to two flats (Bb and Eb). A dynamic marking of *f* is present.

# P.S. I LOVE YOU

By JOHNNY MERCER  
and GORDON JENKINS  
arranged by Glenn Osser

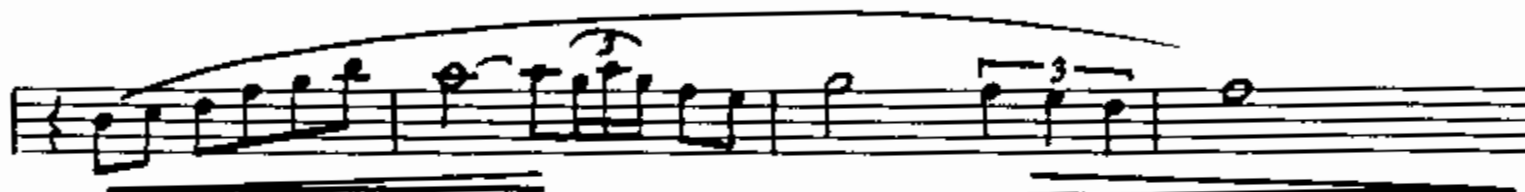
2nd Bb TENOR SAX

MODERATELY SLOW

(NO VIB.)



**A** *Soli*



**C** (With Trom.)



*f*

**F** *Soli*

*f* *ff*

*pp*

**F** *Soli*

*f* *ff*

*pp* *ff*

**G**

*ff*

*ff*

**H** *Soli*

*mf*

*mf*

*mf* *Soli*

*ff* *Soli*

LEEDS STAGE BAND SERIES  
**P.S. I LOVE YOU**

By JOHNNY MERCER  
and GORDON JENKINS  
Arranged by Glenn Osser

**1<sup>st</sup> B $\flat$  TRUMPET**  
MODERATELY SLOW  
(NO VIB.)

*f*

**A**

3 **CUP MUTE**  
*mf*

*b* 4

**OPEN** **TACIT**  
*f*

**B**

*fz*

*fz*

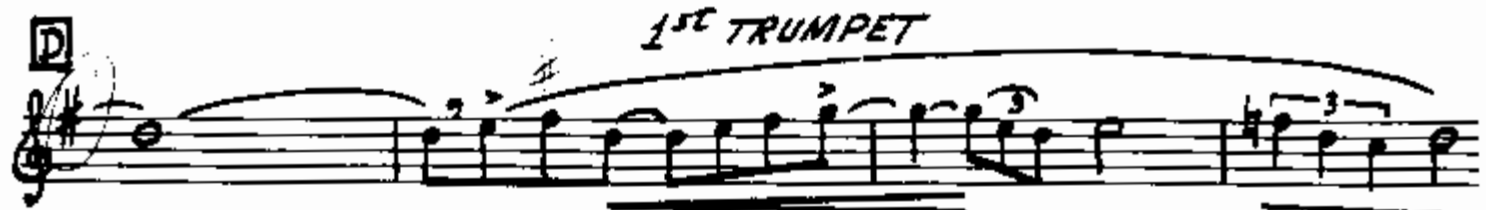
**C**

**TACIT** 4

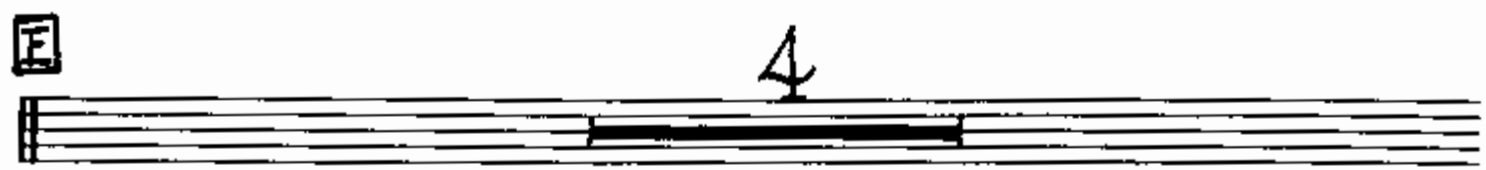
**PLAY**  
*f*

© Copyright MCMXXXIV by La Salle Music Publishers, Inc., New York, N. Y.  
© Copyright renewed MCMXXI and assigned to LEEDS MUSIC CORPORATION, New York, N. Y.  
© Copyright renewed MCMXXII by Johnny Mercer d/b/a COMMANDER PUBLICATIONS  
© Copyright MCMXXIV by LEEDS MUSIC CORPORATION, 122 West 48th Street, New York 24, N. Y.

**D** 1<sup>st</sup> TRUMPET



**E** 4



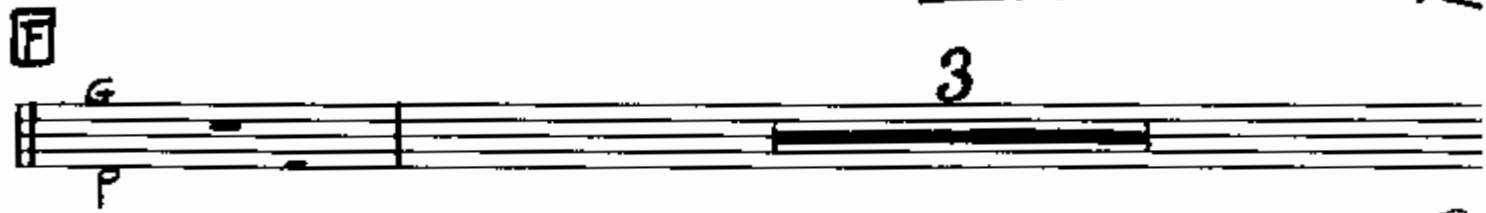
II<sup>o</sup> Tpt. Solo AD LIB (OR AS IS) D9

A7 A<sup>7</sup>M7 G Eb7 A<sup>7</sup>M7 Ab9



**F** 3

G



II<sup>o</sup> Tpt. Solo

A9 A<sup>7</sup>M9 Ab7 G F9 G



**G** PLAY



**H** VOCAL (PLAY) 3 CUP MUTE



OPEN 1

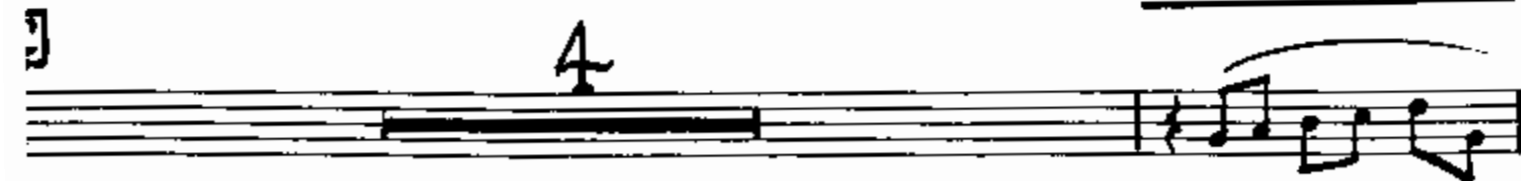
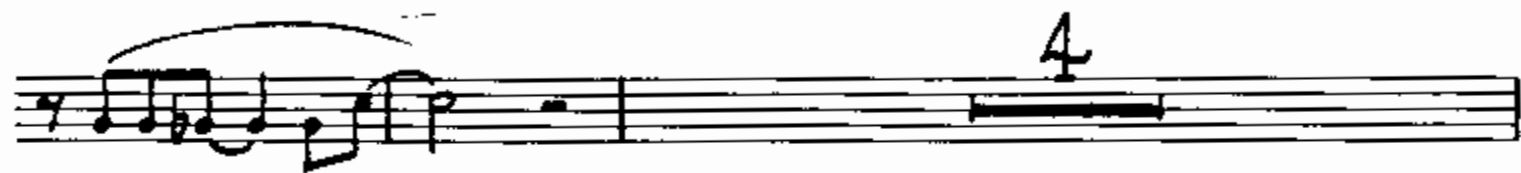
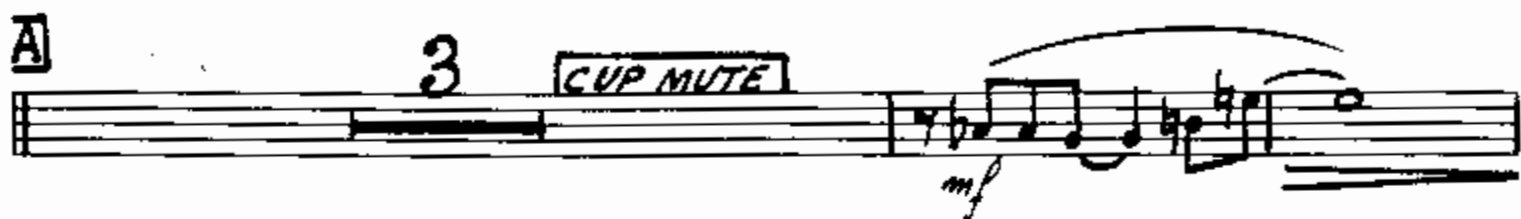




## P.S. I LOVE YOU

By JOHNNY MERCER  
and GORDON JENKINS  
arranged by Glenn Oxter

2nd B♭ TRUMPET  
MODERATELY SLOW  
(NO VIB.)



TRUMPET 2

1

Solo AD LIB (or AS IS)

A7 A7m7 D9 G Eb7 Am7 Ab9

4

3

Solo AD LIB (or AS IS)

A9 Am9 Ab7 G F9 G

PLAY Tutti

3

3

CUP MUTE

mf

OPEN

3

fo rit.

## P.S. I LOVE YOU

By JOHNNY MERCER  
and GORDON JENKINS  
arranged by Glenn Oster

## 1st TROMBONE

MODERATELY SLOW

(NO VIB.)



## C Soli With Saxes



1<sup>st</sup> TROMBONE

*Tutti*

Musical staff with treble clef, key signature of two flats, and a melodic line with slurs and accents.

Musical staff with bass clef, key signature of two flats, and a melodic line with slurs and accents.

Musical staff with a square box containing the number 8 and a horizontal bar below it.

Musical staff with a square box containing the number 7 and a horizontal bar below it.

Musical staff with a square box containing the number 6 and a melodic line with slurs and accents.

Musical staff with a square box containing the number 5 and a melodic line with slurs and accents.

Musical staff with a square box containing the number 3, the text "CUP MUTE", and a melodic line with slurs and accents.

Musical staff with a square box containing the number 2, the text "OPEN", and a melodic line with slurs and accents.

Musical staff with a square box containing the number 1 and a melodic line with slurs and accents.

P.S. I Love You

Ab  
intro  
(batter)

Dear I thought I'd drop a line – the weathers cool ~~the~~

The folks are fine – I'm in bed each night at nine -

P.S. I Love You-

Yesterday we had some rain – but all in all I can't

Complain – <sup>WAS IT DUSTY ON THE TRAIN</sup> ~~everybody's thinking of you –~~

P.S. I Love You

Write to the Brown's just as soon as you're able –

They came around to call – I burned a ~~hole~~ <sup>dine-ning</sup> in the dining

room table – now let me see – I guess <sup>^</sup>that's all –

Nothing left for me to say – and so I'll close – but by the

<sup>↓</sup>Way – everybody's thinking of you -

P.S. I Love You